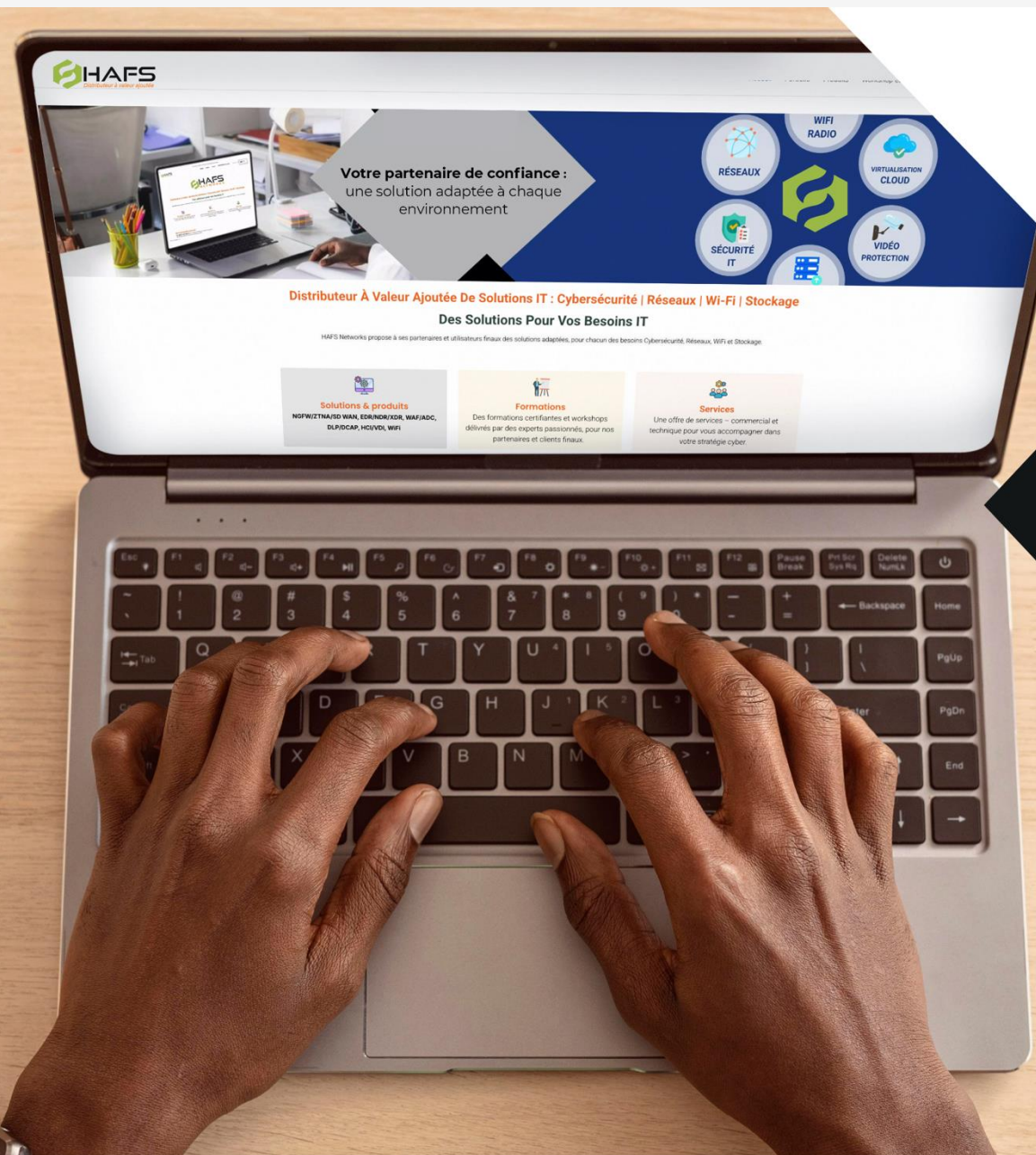




Distributeur à valeur ajoutée de solutions IT  
Cybersécurité | Réseaux | Wi-Fi | Stockage

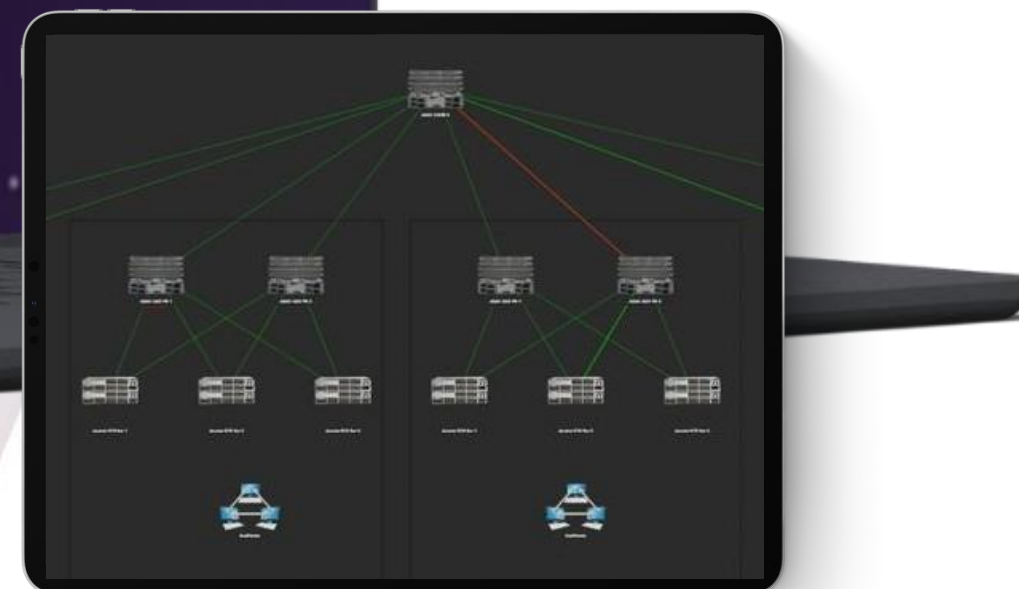


Une solution pour chaque environnement

# MONITOR

ANYTHING WITH 

MonetX is unified monitoring solution uses industry leading monitoring frameworks technologies to monitor the health and performance of the entire IT infrastructure across physical, virtual, and hybrid IT environments



# KEY BENEFITS



- All in one Monitoring Solution ●
- Clear & Powerful Analytics ●
- Real time Dashboards ●
- Alerts & Notifications ●
- Open API Integrations ●
- Customized Reports and Dashboards ●
- Flexible Data Retention ●
- Supports Industry leading protocols ●
- Multivendor Support ●
- Bespoke Customization ●
- Topology Mapping with Real-time visibility ●

# MULTI-VENDOR & MULTI-DOMAIN INTEGRATIONS

## Cloud Resources



## Container Infrastructures



## Databases



## Applications and Services



## Operating Systems (OS)



## Network



### But that's not all!

MonetX comes packaged with over 240 official templates for major and hardware vendors.

# VISUALIZATION

Leverage a large selection of highly flexible dashboards and widgets to get a comprehensive view of your entire monitored infrastructure

Display and track your infrastructure component states on geographical and network maps. Receive daily, weekly, monthly, or yearly reports and get a periodic overview of your infrastructure



**Dashboard**



**Performance Data**



**Topology Maps**



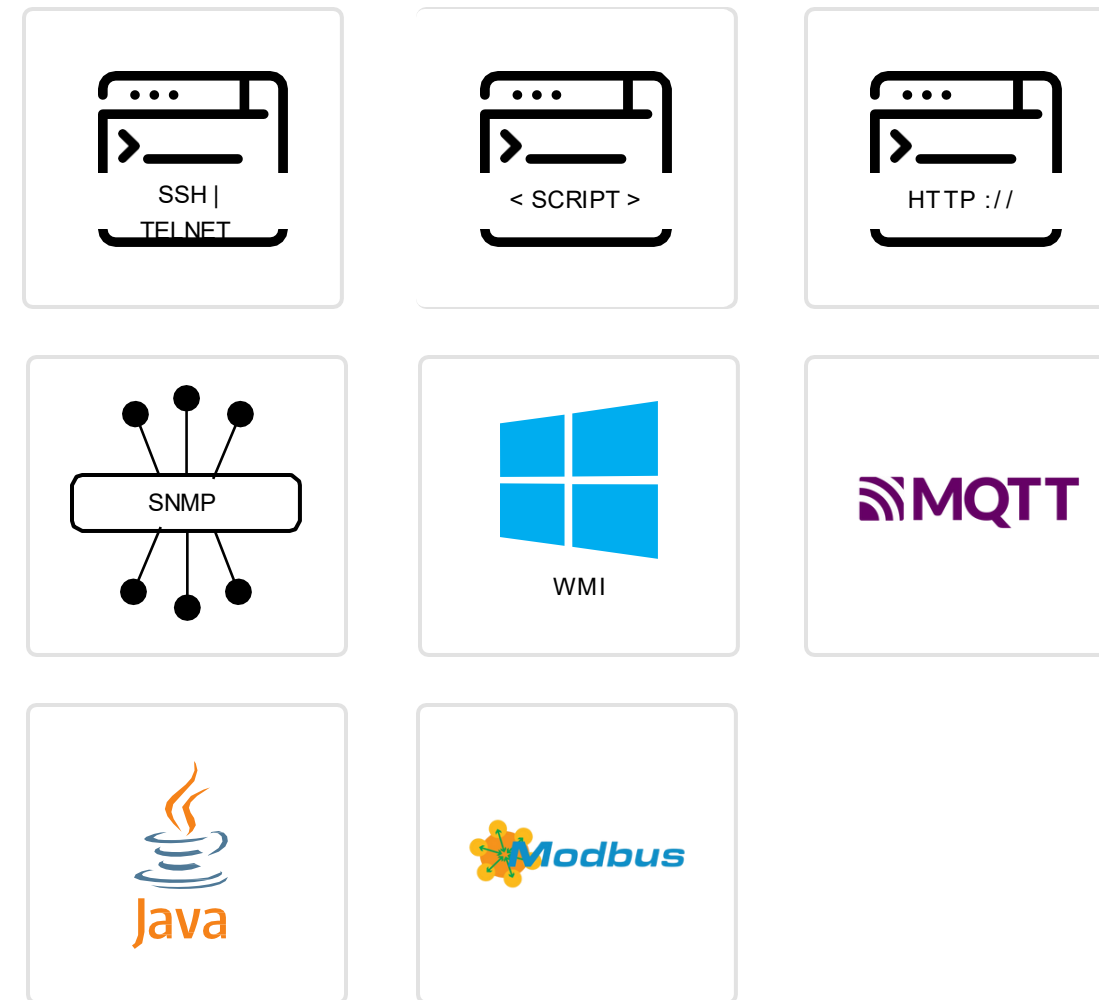
**Geo Maps**

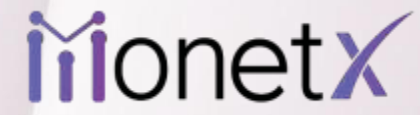


**Reports**

# DATA COLLECTION

Utilize a variety of agentless data collection approaches for the distributed monitoring of your end-points from servers and network devices to web applications and cloud deployments.



The MonetX logo features the word "MonetX" in a purple, sans-serif font. The letter "i" is stylized with a vertical line through it. The background of the top left corner consists of overlapping purple and blue geometric shapes.

# ALERTING

MonetX comes packaged with over 30 official integrations for a variety of ITSM, messaging, and ticketing vendors, so it's easy to get instant notifications and alerting.



slack

SysAid



ATLASSIAN  
Opsgenie

The OTRS logo, featuring a stylized 'X' shape made of four intersecting lines in red, blue, and green. **OTRS**



zendesk

The Jira Service Desk logo, featuring a blue lightning bolt icon. **Jira Service Desk**

servicenow



Zammad

ManageEngine  
**ServiceDesk Plus**



VictorOps

PagerDuty

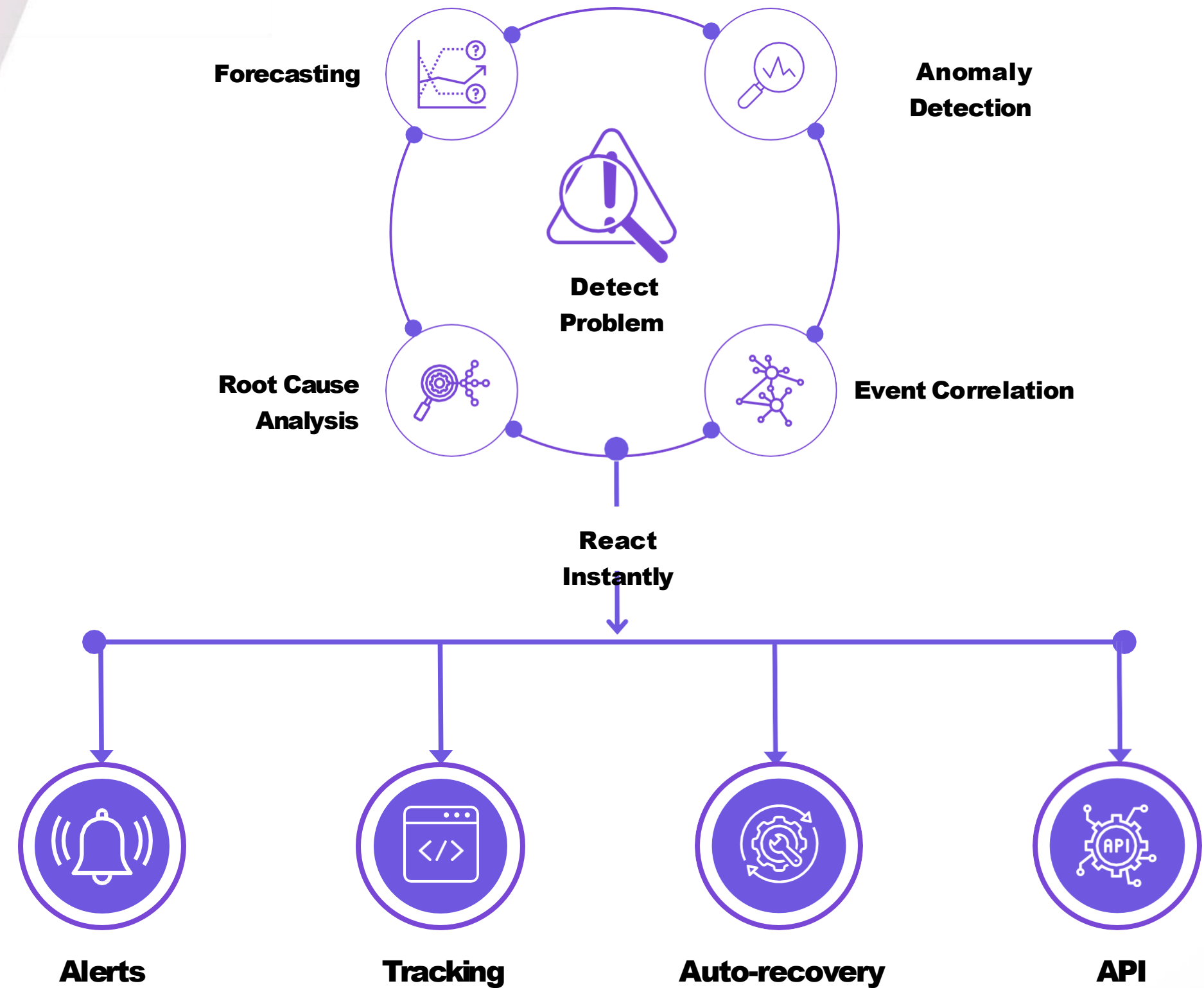


Mattermost

**GLPI**

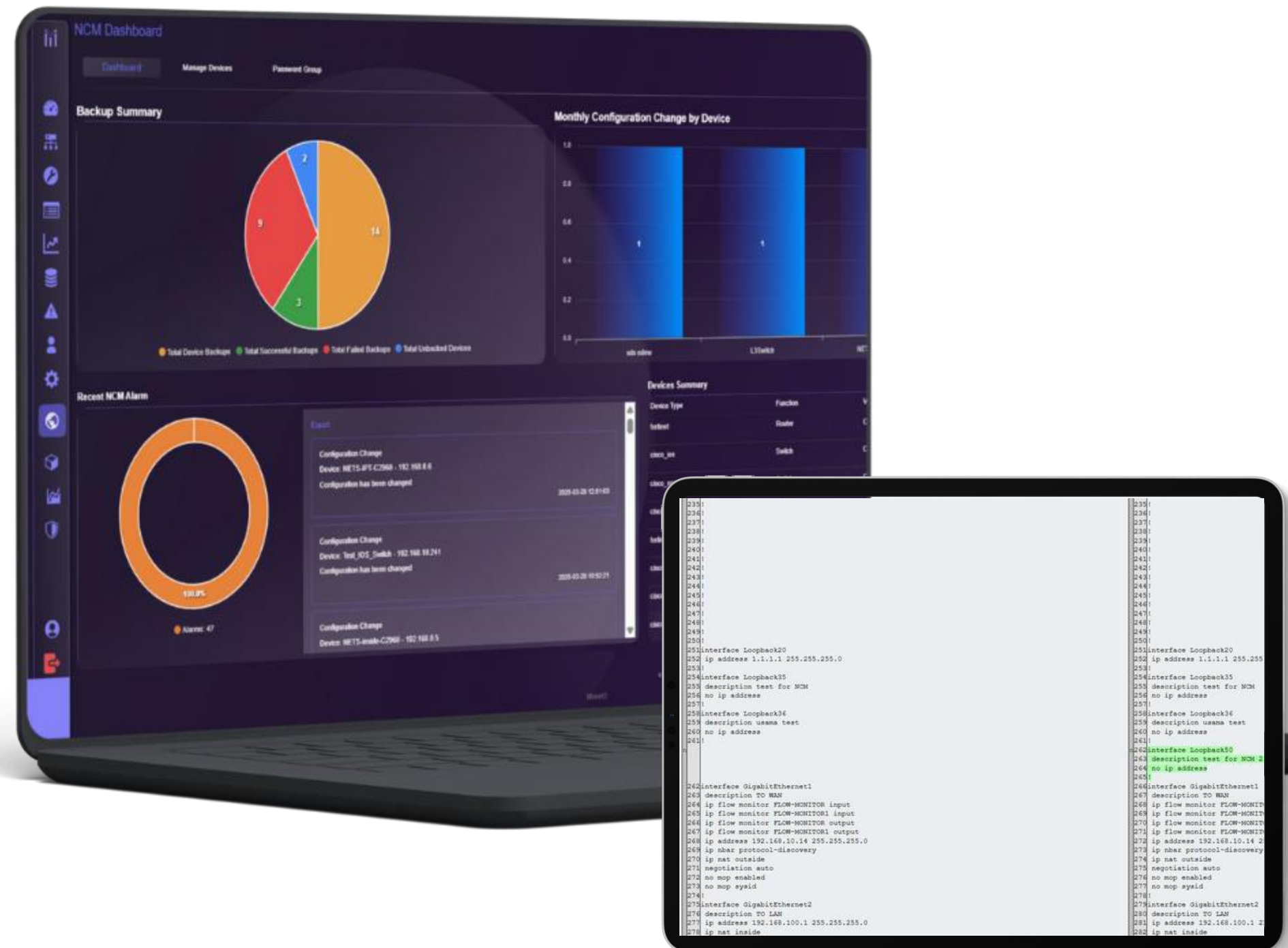
# DETECT PROBLEMS

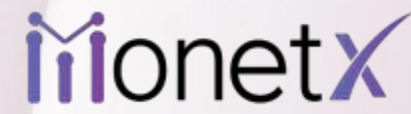
Predict, detect, and react to problems proactively with native forecasting, root cause analysis, correlation, and anomaly detection features. Send alerts, integrate MonetX with ticketing systems, or automatically remediate detected problems.



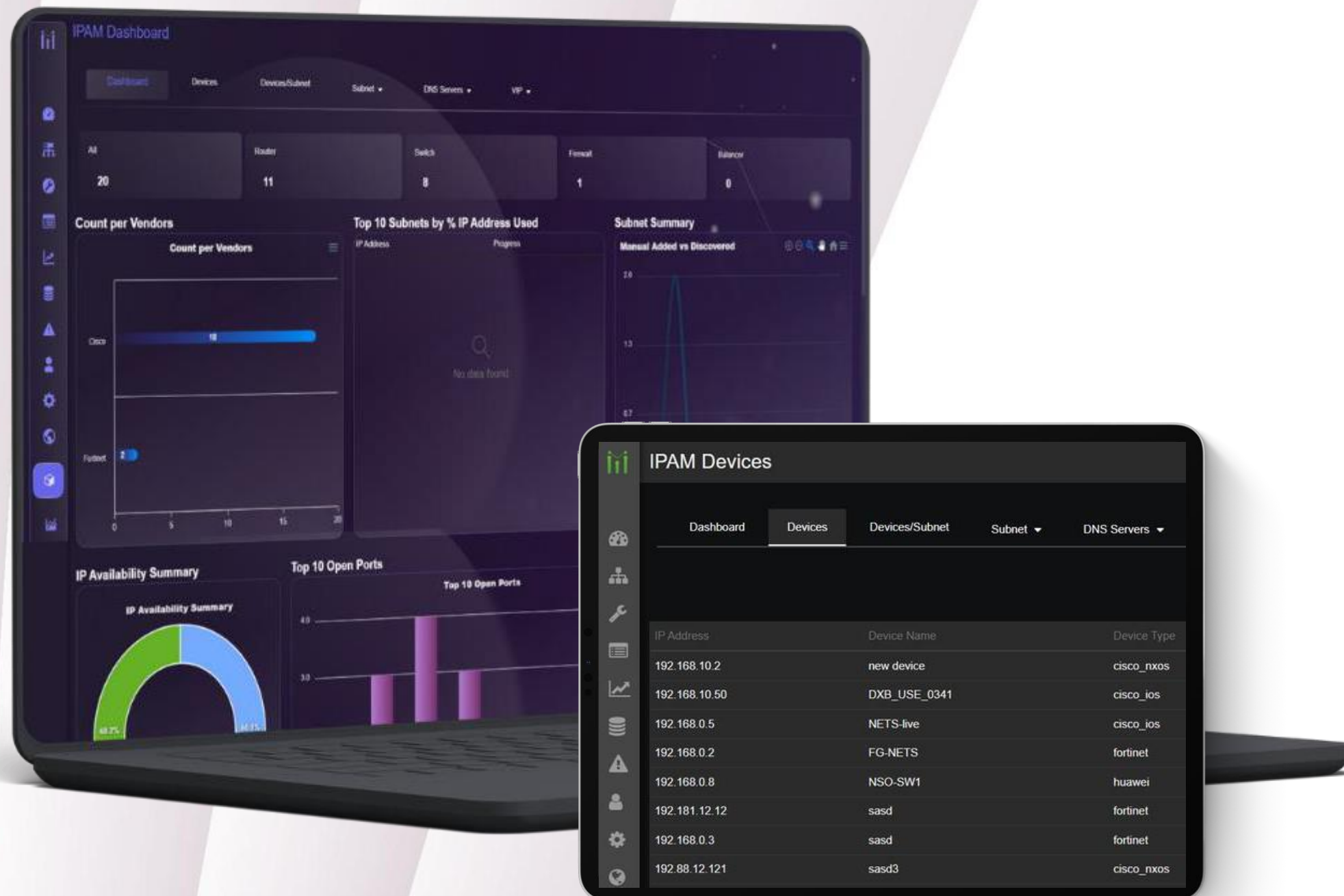
# NCM DASHBOARD

- **Automatic Backups:** Never miss a beat—timely configuration updates are ensured, keeping your network secure and up-to-date.
- **Effortless Configuration Comparisons:** Spot changes instantly and maintain consistency with an intuitive comparison feature.
- **Quick Export:** Export configurations directly to your PC with ease for offline analysis or archiving.
- **Remote Command Execution:** Send commands via SSH to one or multiple devices at once, all from the comfort of your dashboard.





# SIMPLIFY NETWORK VISIBILITY WITH SEAMLESS IP MANAGEMENT



- Advanced solution for network operations
- Gathers detailed IP data from all devices, including Interfaces, VLANs, Virtual IPs (e.g., HSRP, VRRP)
- Access critical information in one centralized dashboard: Interface descriptions, VLAN names, Subnets & Statuses
- Remote Command Execution: Send commands via SSH to one or multiple devices at once, all from the comfort of your dashboard.
- Easily track IPs and streamline troubleshooting

# USE CASES

- **Conditional Monitoring:** Monitor KPIs for critical IT services based on infrastructure health and analyze the real-time impact of device failures.
- **SLA Monitoring:** Define and track service level targets for availability and performance, ensuring SLA compliance.
- **Event Correlation:** Analyze trends and quickly identify performance bottlenecks.
- **Power vs Link Failure Detection:** Pinpoint device unavailability causes (power vs. link) with distinct SLA reports.
- **Faster Resolution:** Detect performance issues early with real-time visibility to minimize downtime.
- **Unified View:** Provide a 360-degree view of the network, IT assets, and applications to anticipate and resolve issues efficiently.

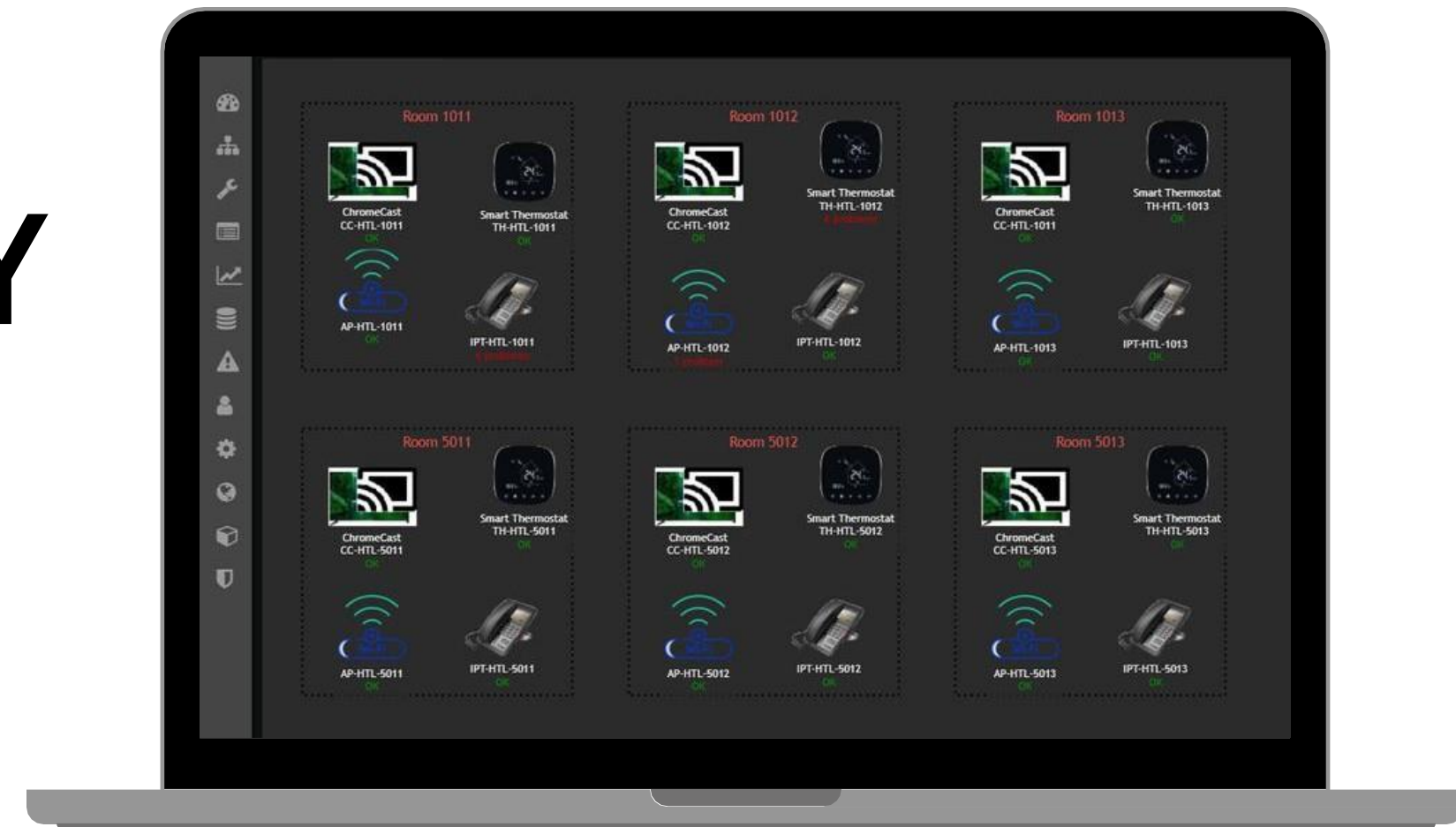


# MONETX: ENHANCING HOSPITALITY IT EFFICIENCY

In the hospitality industry, where guest satisfaction is paramount, a robust IT infrastructure is essential. MonetX, an advanced monitoring platform, ensures seamless hotel operations by providing real-time visibility into network health, applications, and IoT devices.

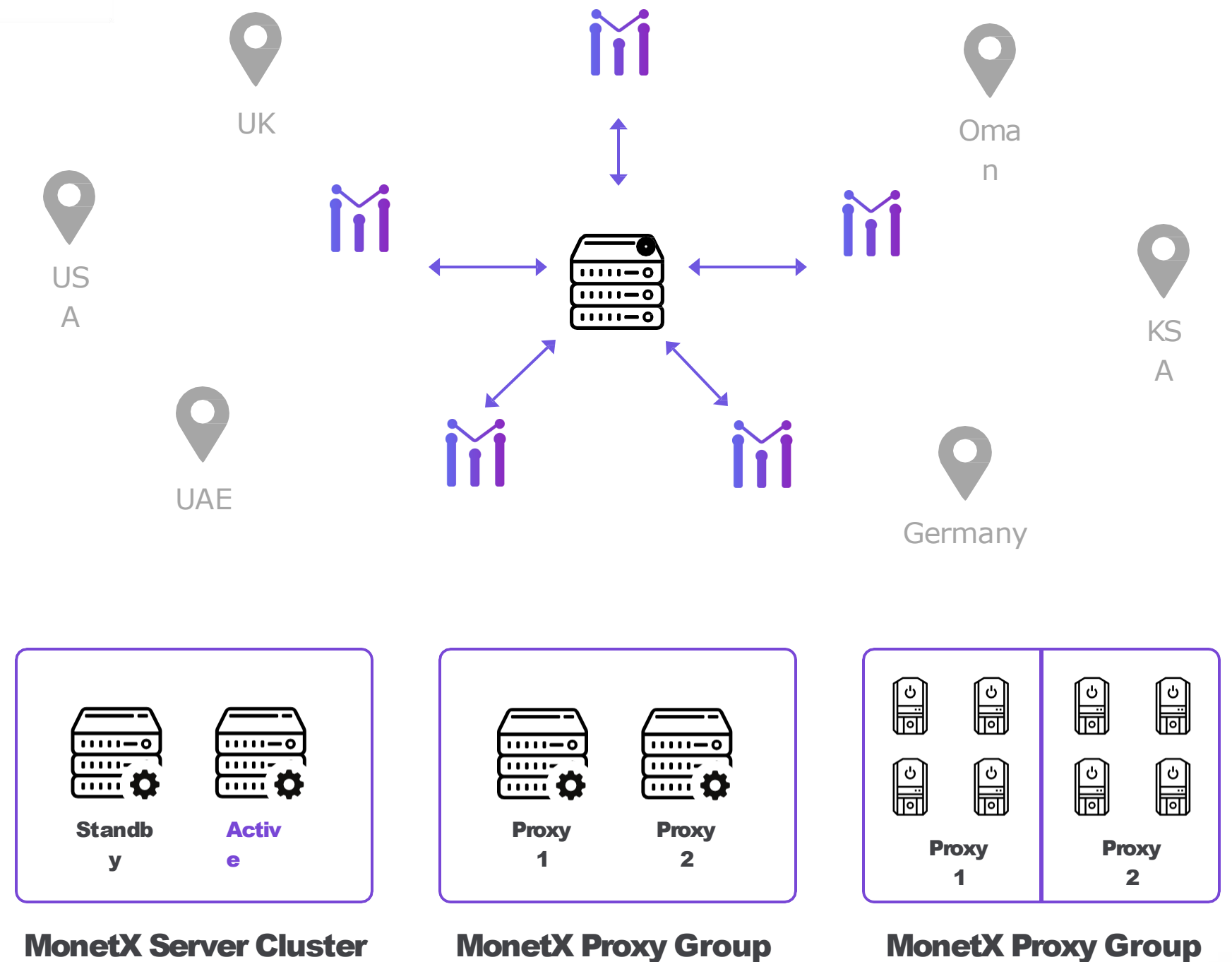
With MonetX, hotels benefit from uninterrupted Wi-Fi, efficient energy management, and proactive issue resolution. It monitors smart room systems, security devices, and Property Management Systems (PMS), enhancing guest comfort and safety.

For hotel chains, MonetX offers centralized monitoring, ensuring consistent performance across multiple locations. Its proactive maintenance capabilities detect issues before they disrupt operations, keeping hospitality services smooth and efficient.

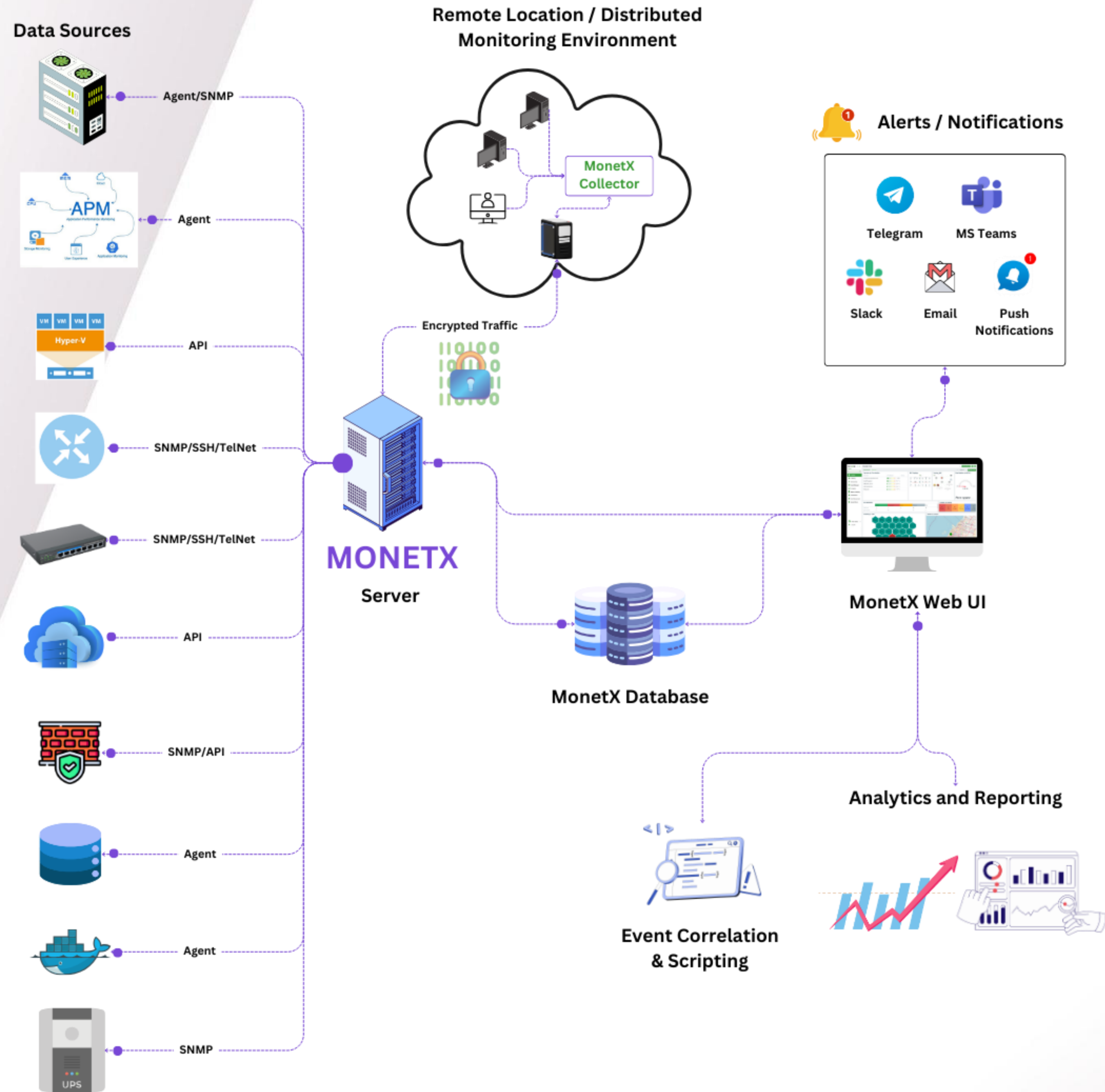


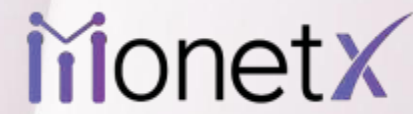
# SCALABILITY AND REDUNDANCY

- Collect data even during unexpected network outages by distributing your monitoring across remote locations such as data centers and branch offices all over the globe.
- MonetX provides a native host load balancing solution by allowing users to configure proxy groups and balancing hosts across proxies within a proxy group.



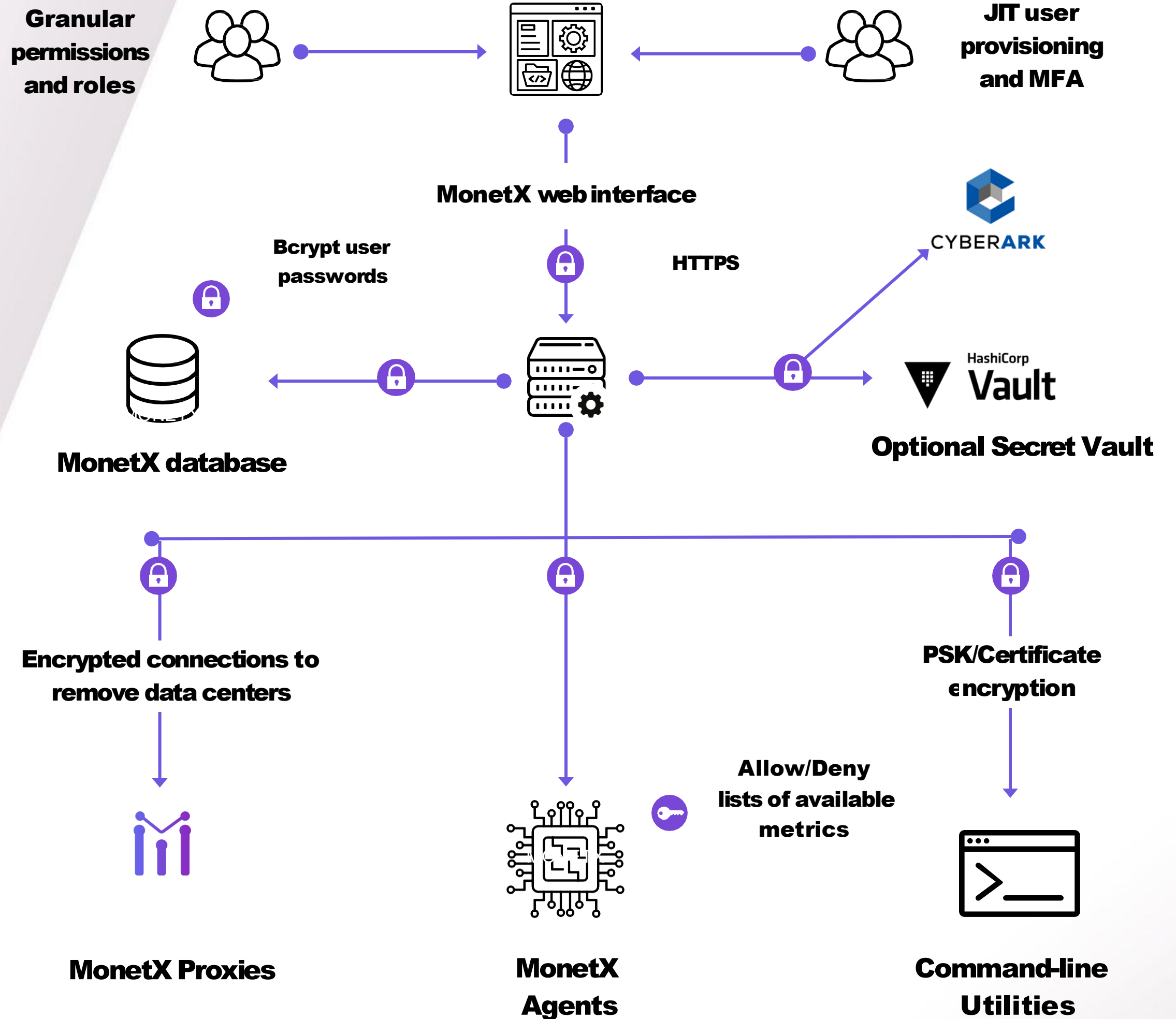
# ARCHITECTURE DIAGRAM





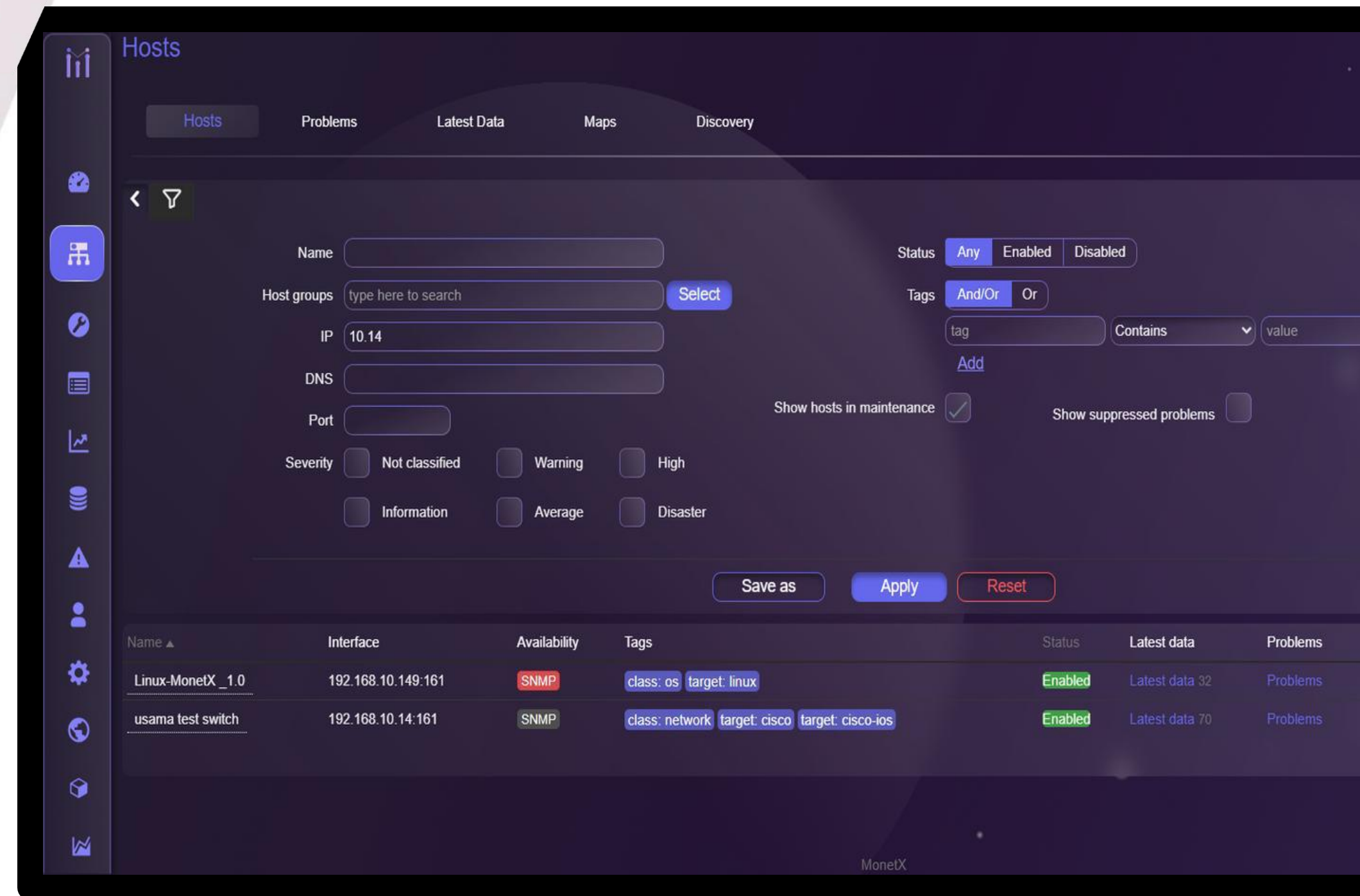
# SECURITY

Provides a robust set of internal permission and compliance mechanisms as well as TLS encryption support for incoming and outgoing connections.



# WHY MONETX?

Our enterprise IT infrastructure monitoring software can deploy anywhere and monitor any device, system, or app in any environment while providing comprehensive data protection, easy integration, and limitless visualization options.



# INDUSTRIES

## HEALTHCARE

The average modern hospital relies on tens of thousands of connected devices and manually checking each one for anomalies simply isn't practical. With MonetX, hospital IT teams receive potentially life-saving alerts if anything is out of the ordinary.

## FINANCE

Financial institutions depend on their networks to maintain connectivity and productivity. MonetX allows banks to proactively detect and resolve network problems before they turn into major business disruptions, improving uptime and efficiency.

## EDUCATION

In an age of digital course materials and resources, schools and universities can't operate without properly functioning IT infrastructures. MonetX has proven itself to be a simple, cost-effective method of monitoring geographically distributed campuses and educational sites.

## GOVERNMENT

Network monitoring is critical for government agencies, as downtime can bring a halt to vital public services. MonetX keeps watch on your infrastructure and network utilization, making it easy to stay ahead of any issues and keep your systems running.

## RETAIL

Retail environments increasingly depend on network-connected equipment, so they can't get away with monitoring only a subset of their connected devices. MonetX makes it possible for retailers to easily monitor every port on every network device.

## TELECOM

Millions of massive-data devices are currently connected to networks and generating value for communication service providers. By keeping track of network health and performance, MonetX can improve customer experience and drive growth.

# MONETX USE CASES IN THE HOSPITALITY INDUSTRY

## NETWORK & WI-FI MONITORING

Ensures stable, high-speed internet for guests and staff.

## SMART ROOM & IOT DEVICE MONITORING

Tracks lighting, temperature control, keyless entry, and guest room sensors.

## PROPERTY MANAGEMENT SYSTEM (PMS) INTEGRATION

Monitors PMS health to prevent disruptions in reservations, check-ins, and billing.

## SECURITY & SURVEILLANCE MONITORING

Tracks IP cameras, access control systems, and alarm systems in real-time.

## ENERGY MANAGEMENT OPTIMIZATION

Monitors HVAC systems and power consumption to reduce energy costs.

## MULTI-LOCATION HOTEL CHAIN MONITORING

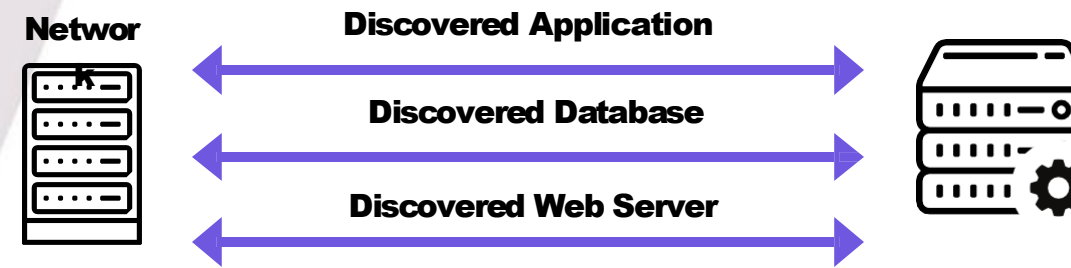
Provides a centralized view of IT operations across multiple properties.

## PROACTIVE MAINTENANCE & ISSUE PREVENTION

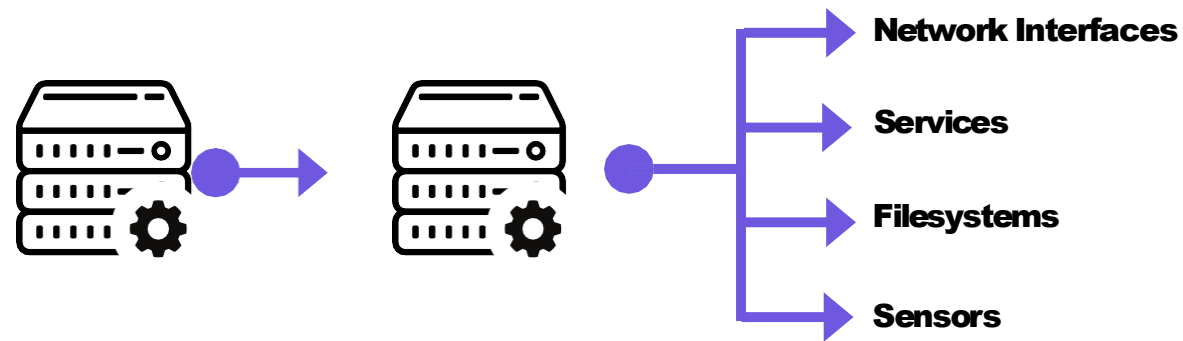
Identifies and resolves IT issues before they impact operations.

# AUTOMATION

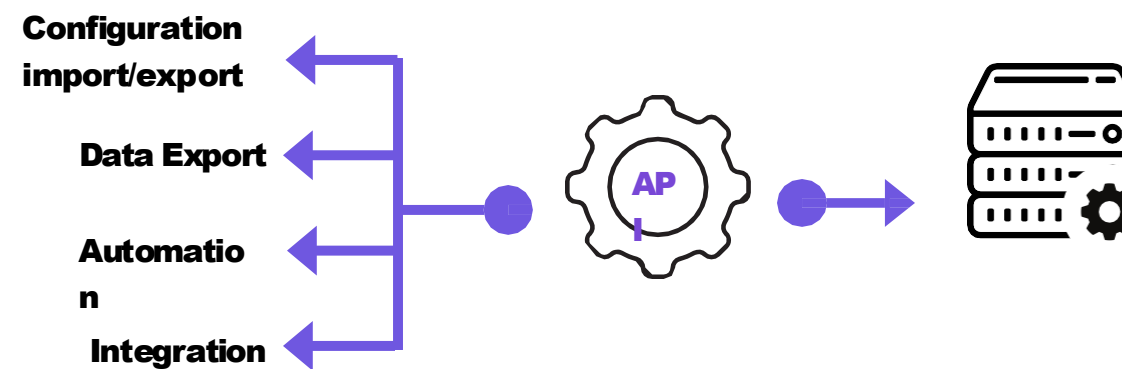
Automate your monitoring endpoint onboarding and offboarding workflows, automatically discover, filter, and start monitoring existing resources, and integrate MonetX with third-party vendors.



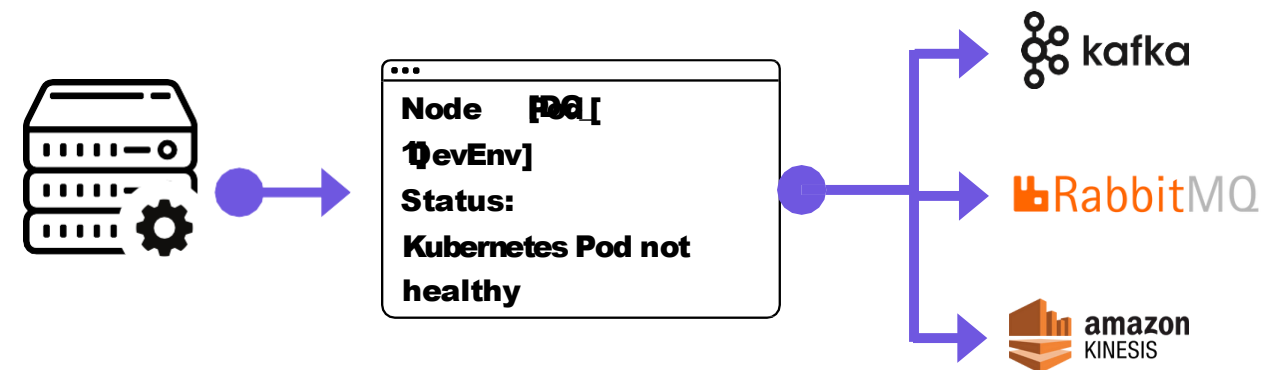
Automatic monitoring endpoint onboarding/offboarding



System resource hardware component, sensor, application, and service discovery



Automate configuration changes and export MonetX data with MonetX API



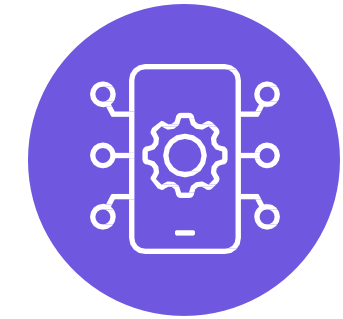
Stream Metrics and events to message brokers, data lakes and AI engines.

# INTEGRATION WITH SIEM

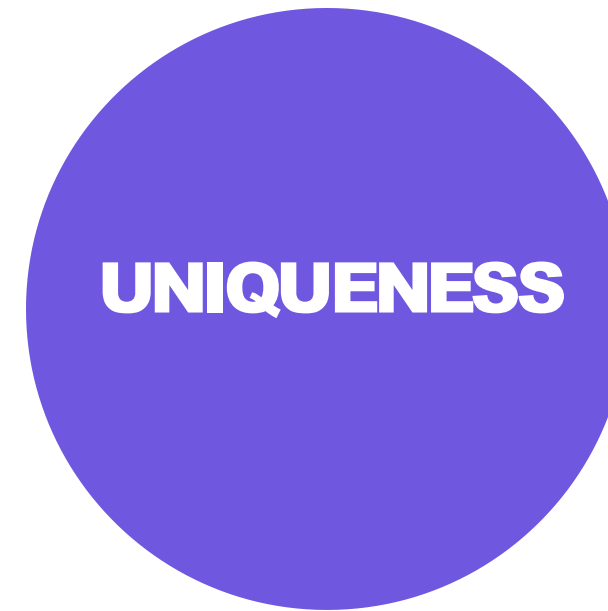
SIEM aggregates and analyze activities for entire company's infrastructure. It helps organizations in detecting potential threats & vulnerabilities before attacker disrupt business. SIEM collects security data from network devices, servers, domain controllers, mobile devices.



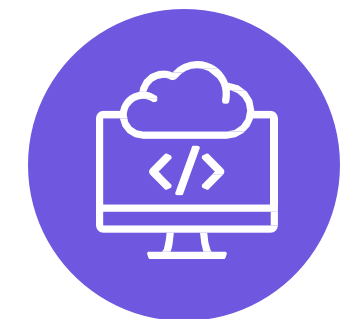
**Custom Dashboard and Reports**



**Android Device Integration**



**Easy Adoption and Deployment**



**Web and Desktop Application**

# FEATURES OF MONETX SIEM



**Log Analysis and Log Management**



**Security and logs data Analytics**



**Intrusion & Vulnerability Detection**



**Configuration Assessment**



**Custom Dashboard & Reporting**



**Web and Desktop**



**Compliance Reporting (ISO 27001, GDPR, HIPAA, NIST, PCI DSS & NESA)**

# ADVANTAGES OF MONETX SIEM



**Improved and Real-time Threat Detection**



**Faster Incident Response**



**Better Intelligence for Threat Hunting**

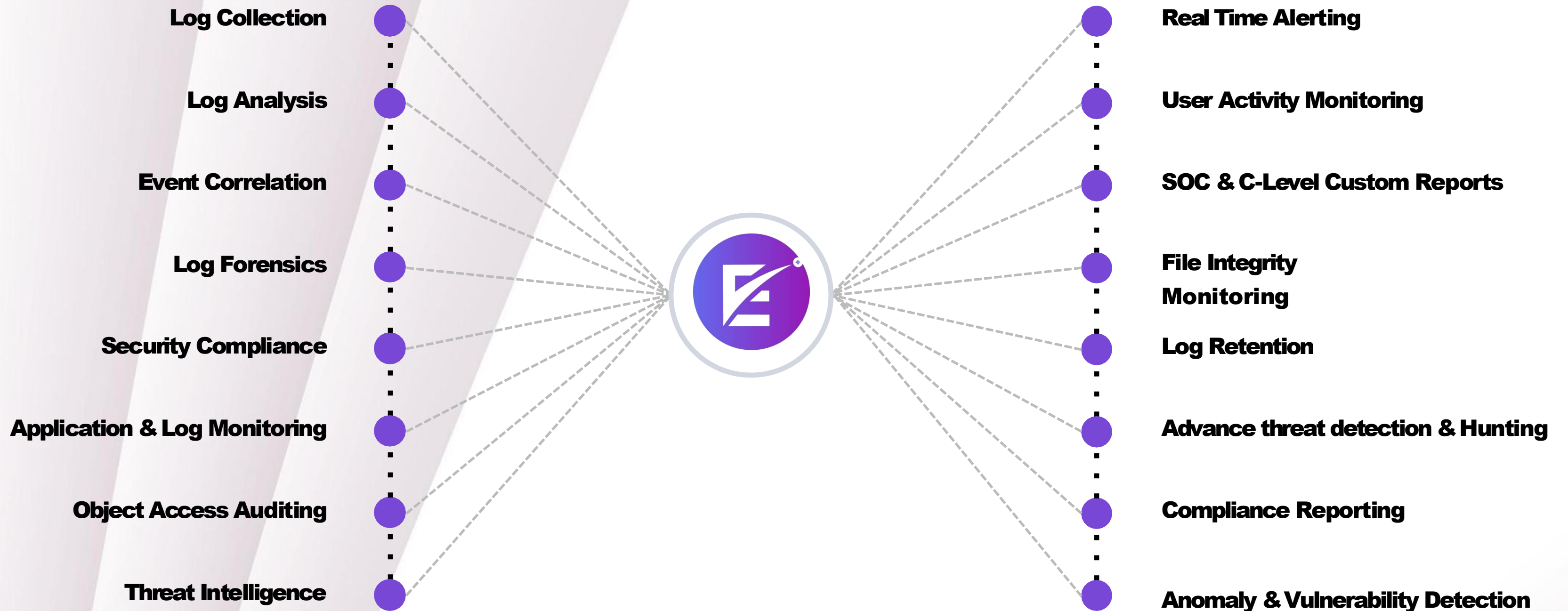


**Better Coverage and Threat Visibility**



**Improved Incident Response and Reporting**

# COMPONENTS OF MONETX SIEM



FEATURES	iiionetX	SOLARWINDS	ManageEngine	PRTG	ZABBIX
1. Real-time performance/ Monitoring Metrics • IT Infrastructure • Hardware Appliances • Network • OS • Applications • Web Servers • Database (SQL & NoSQL) • IOT Devices • Native apps • Dockers K8S and others	✓	✓	Separate Module	Separate Module	✓
2. SIEM	✓	Limited	Separate Module	✗	✗
3. Threat Intelligence (TI)	21 TI Sources & MITRE ATT&CK Integration	Basic	Global Threat Feeds IE: STIX/TAXII Feed	✗	✗
4. Regulation Compliance	ISO 27001, PCI-DSS, HIPAA, GDPR, NIST, CIS Benchmarking	Basic Compliance and Reporting	ISO 27001, PCI-DSS, HIPAA, GDPR, NIST	✗	✗
5. UPS / Power Monitoring	✓	✓	✓	✓	✓
6. Automation Based Monitoring	✓	✓	✗	✗	✗
7. SLA Monitoring	✓	✓	✓	✗	✓
8. Smart Auto Discovery based on checks	✓	✓	✓	✓	✓
9. Intelligent Alerts	✓	✓	✓	Limited	✓
10. Issue Diagnosis and Root Cause Analysis	✓	✓	✓	✓	✓
11. Live Network Topology Diagram	✓	✓	✓	Limited	Limited
12. Customized Reporting	✓	✓	✓	Limited	✓
13. Customized Dashboard	✓	✓	✓	Limited	✓
14. Bandwidth Monitoring	✓	✓	✓	✓	✓
15. Service Visibility	✓	Limited	Limited	Limited	Limited
16. NCM	✓	✓	Separate Module	✗	✗
17. IPAM	✓	✓	Separate Module	Limited	✗
18. Event Correlation	✓	✓	✓	✗	✗
19. Private / Openstack Cloud	✓	✓	✓	✓	✓
20. Public Cloud Monitoring With Cost Analysis	✓	Limited	Limited	Limited	Limited
21. Customized Service Level Visibility Of Next - Gen Devices	✓	✓	✗	✗	✗
22. Customized Scripting For Automation	✓	✓	✓	✗	Limited
23. MFA with Google, Microsoft and Duo Authenticator	✓	✓	✓	✓	✓
24. Customization as per Requirement	✓	✗	✗	✗	✗
25. Role-based Access Control	✓	✓	✓	Limited	✓
26. Condition Based Notification Triggers	✓	✓	✓	✗	✓
27. CCTV Monitoring	✓	✓	✓	✓	✓
28. Multi-Language	✓	✓	✓	✓	✓
<b>INTEGRATIONS</b>					
1. Protocols Supported (SNMP, API & Agents)	✓	✓	✓	✓	✓
2. Security	✓	✓	✓	✓	✓
3. SAML /LDAP Authentication	✓	✓	Limited	Limited	✓
<b>LICENCES</b>					
1. On-prem - Subscription	✓	✓	✓	✓	✓
2. Cloud - Subscription	✓	✓	✓	✓	✓
3. White Labeling	✓	✗	✗	✗	✗
<b>NODES</b>					
1. On-prem - Subscription	Unlimited	Limited	Limited	Limited	Limited
2. Cloud - Subscription	Limited	Limited	Limited	Limited	Limited

Distributeur à valeur ajoutée de solutions IT

Cybersécurité | Réseaux | Wi-Fi | Stockage

## **HAFS NETWORKS,**

Représente et accompagne les éditeurs et les constructeurs pour créer de la proximité auprès des partenaires et des clients finaux.

### **Notre objectif :**

Proposer des solutions qui répondent aux besoins.  
Accompagner, former et développer pour accroître le rayonnement sur le marché français et en Afrique subsaharienne.

Solutions

Formations

Services



# Portfolio Solutions



**NEXT GEN  
FIREWALL**

**HSM / HSA**

**ZTNA**  
Zero-Trust Network Access

**SD-WAN**

**EDR**  
Endpoint Detection and Response

**NIPS**  
Network Intrusion Prevention System

**NDR**  
Network detection and response

**WAF**  
Web application firewall

**ADC**  
Load balancer application

**XDR**  
Extended Detection et Response

**DLP/NEXT GEN DLP**  
Data loss prevention

**NAS/SAN**

**HCI/VDI**

**SWITCH**

**Wifi/Wireless**

**Wifi Penetration  
Testing**

**Vulnerability  
scanner**

**Web Vulnerability  
Scanner**

**STRONG  
AUTHENTICATION**  
Hardware Token Authentication

**IAM / MFA**  
Identity et Access Management

**NETWORK  
VISIBILITY**  
Network Performance Monitoring

# Portfolio Solutions



Site web : [www.hafs-networks.com](http://www.hafs-networks.com)

## France

sales@hafs-networks.com  
+33 (0)6 51 10 87 49 / (0)9 74 98 52 96

## Côte d'Ivoire

sales-ci@hafs-networks.com  
+225 07 89 82 56 49 / +225 07 59 05 85 82